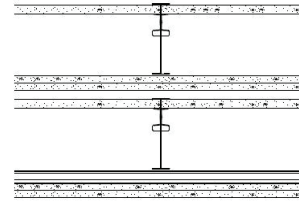
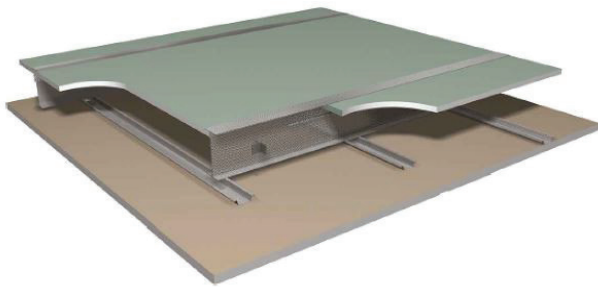


Gyproc ShaftWall Horizontal Double Frame - Double Boarded System @ 600mm centres



Consumption Rate Criteria

Stud Type	Gypframe 'I' Stud
Stud Spacing	600mm centres
MF5 Spacing	400mm centres
Ceiling Span	5100mm
Ceiling Area	100m ²

Component	Total Quantity per 100m ²
Gyproc FireStop	400 m ²
Gypframe 19mm CoreBoard	200 m ²
Gypframe 'I' Stud (Custom length 5100mm 'I' stud to be ordered)	327 m
Gypframe Extra Deep Channel	40 m
Gypframe RC Retaining Channel	688 m
Gypframe SC Starter Channel	21 m
Gypframe GA3 Angle (not required if ShaftWall ceiling span(parallel to the 'I' Stud) is less than 3000mm)	35 m
Gyproc GFS1 Fixing Strap	35 m
Gypframe MF5 Furring Channel	246 m
Gyproc Jackpoint Drywall Screws (Inner Layer)	3960 pieces
Gyproc Jackpoint Drywall Screws (Outer Layer)	3960 pieces
Gyproc Jackpoint Wafer Head Screws	1336 pieces
Gyproc Sealant	6 tubes
Isover APR Glass Wool insulation supplied by KIMMCO (If required)	100 m ²
Gyproc Joint Tape	130 m
Gyproc Jointing Compound	28 kg
Gyproc GA1 Perimeter Angle	11 m

For General Consideration

- The above quantity take-off to be read in conjunction with the Gyproc proposal for the project and the Gyproc White Book available at www.gyproc.ae
- Gypframe Channel requirements may differ depending on ceiling length and width combinations within 100m² area.
- Consumption rates estimated from typical ceiling dimensions of (5.1m x 19.6m) 100m² total area. The material requirement have been based on the standard Gyproc System proposed and does not include wastage.
- It is the responsibility of the ordering authority to check the above quantities against final drawings, BOQ and site conditions before placing material orders. Gyproc cannot be held liable for actual quantities required for the project.