



GYPROC® TIE WIRE ANCHOR

Gyproc Tie Wire Anchor is zinc coated and corrosion resistant. It uses a reliable wedge anchor fixing with a closed eyebolt design to suspend Gypframe T Grid ceiling systems from concrete soffits.

CHARACTERISTICS

- Simple and quick installation
- The head is designed to easily receive the hook of Gypframe Hanger Rods
- Economical and effective

TECHNICAL DATA

Anchor length (mm)	60
Anchor diameter (mm)	6
Minimum engagement into substrate (mm)	35
Minimum distance between anchors (mm)	70

APPLICATIONS

Gyproc Tie Wire Anchors are designed for either cracked or uncracked concrete soffits.

The wedge anchor design may also be used on other solid masonry backgrounds.

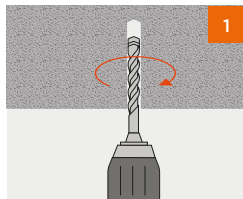
PULL OUT LOADS

Design load* (kN)	5.40
Permissible load** (kN)	2.16

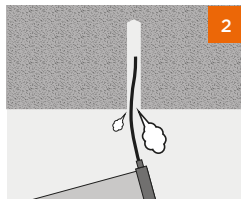
*Tested on C25/30 uncracked concrete with 35mm embedment depth

**Safety factor of 2.5

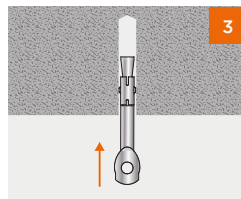
INSTALLATION GUIDELINES



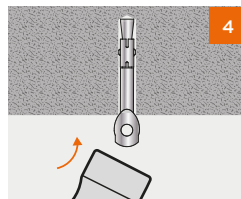
1
Mark and drill the appropriate depth hole using a 6mm drill bit



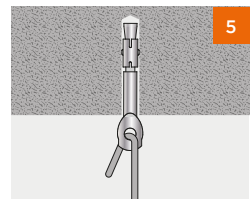
2
Remove any debris and dust from the hole



3
Insert the anchor



4
Hammer the anchor securely



5
Ensure the fixing is secure. It is now ready to receive the Gypframe Hanger Rod

T: 800 GYPROC (497762) UAE TOLL FREE

T: +971 (4) 814 3666 INTERNATIONAL

www.gyproc.ae

First Edition

Literature Code: 333-PLT

