



# GYPROC® METAL CORNER TAPE

**Gyproc Metal Corner Tape** is a high quality paper joint tape strengthened with two corrosion-resistant galvanized steel strips for the finishing of internal and external angles in drywall construction.

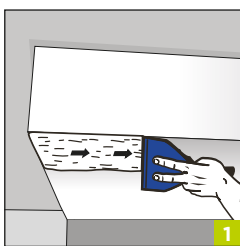
## CHARACTERISTICS

- Easy to apply
- Flexible steel backing easily fits a wide range of angles
- Pin hole perforations for better application and improved bonding
- Suitable for construction, repair or alteration work
- Conforms to EN 14353
- Ideal for bulkheads and external corners not subject to impact

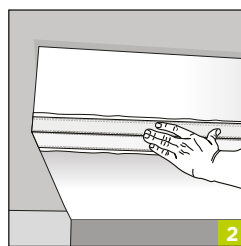
## TECHNICAL DATA

Length (m)	Width (mm)	Thickness (mm)	Quantity per box (roll)
30	50	0.5	10

## INSTALLATION GUIDELINES



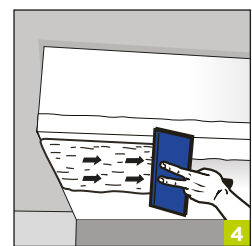
1  
Apply Gyproc® Jointing Compound with a 100mm tapping knife to both sides of the corner at least 100mm wide and 1-2mm thick ensuring that the paper liner is fully covered with joint compound.



2  
Press Gyproc® Metal Corner Tape into position and straighten. Firmly embed corner trim using the tapping knife or roller. Remove any excess compound and allow to dry.



3  
Apply a second coat of Gyproc® Jointing Compound with a 150mm tapping knife, carefully feathering the compound 150mm out from the nose of the trim. Allow to dry.



4  
Apply a finishing coat of Gyproc® Jointing Compound to the corner as smoothly as possible with a 200mm finishing knife, feathering out the final coat 200mm from the nose of the trim. Allow to dry. Sand and paint.

T: 800 GYPROC (497762) UAE TOLL FREE

T: +971 (4) 4502300 INTERNATIONAL

[www.gyproc.ae](http://www.gyproc.ae)

Literature Code: 0309-FL-01

