

gyptone® e'sens quattro 3.5mm

Perforated acoustic gypsum tile



SUPERIOR AESTHETICS



ACOUSTIC COMFORT



INTERIOR CEILINGS



SQUARE PERFORATION

Description

Gyptone® e'Sens Quattro 3.5mm acoustic tiles provide a highly aesthetic design whilst optimising acoustic comfort within the space, improving reverberation times and increasing speech intelligibility.

Application

For internal dry area use with Gypframe® T and Gypframe® Eco T grids systems.

Benefits

- Enhanced visual appeal.
- Pre-painted.
- Re-paintable.
- Class A fire performance.
- Class C sound absorption.
- Durable.
- Demountable.

Installation facts

Gyptone® e'Sens is gypsum-based tile with acoustic fleece behind for enhanced acoustic performance.

Material

Gypsum - Pre-painted

Perforation information

3.5x3.5 mm square

Weight

12.0 mm: 7.0 kg/m²

Note: Post perforation

Colour

White

Note: Other colours on request against minimum order quantity.

Edge



Edge A

Edge E15/24

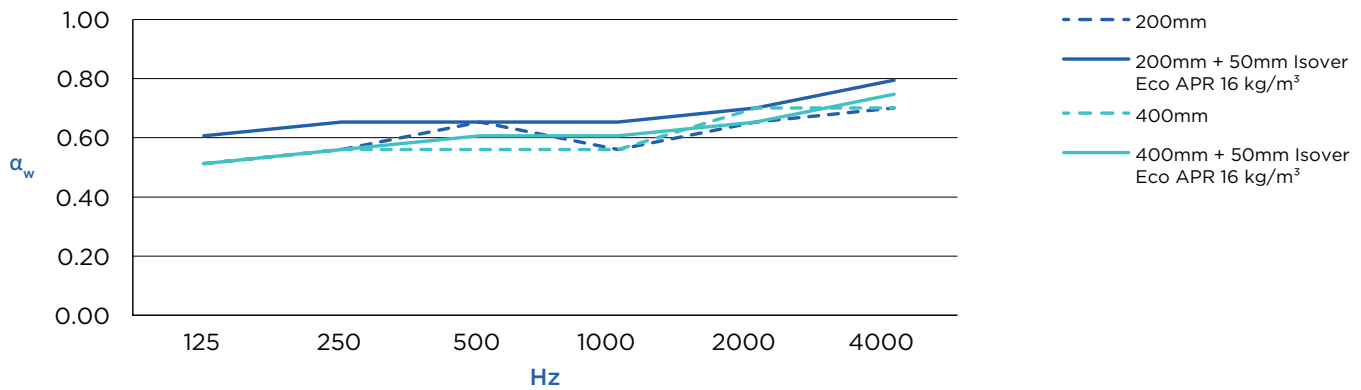
System performance

Please refer to The White Book by Saint-Gobain Gyproc Middle East or technical specification document for system-dependent performance.

Performance

Reaction to fire	Class A	ASTM E84
Noise reduction co-efficient	Up to 0.70 NRC	ASTM C423
Weighted sound absorption co-efficient	Up to 0.75 α_w	ISO 354, EN ISO 11654
Relative humidity	70% at 25°C 90% at 30°C	ASTM C367
Volatile organic compound	Pass	CDPH

Acoustic performance



Plenum depth	Insulation	Frequency (Hz)						α_w	NRC	Absorption class
		125	250	500	1000	2000	4000			
200 mm	-	0.55	0.57	0.70	0.60	0.70	0.75	0.70	0.65	C
200 mm	50 mm	0.65	0.91	0.70	0.70	0.75	0.85	0.75	0.70	C
400 mm	-	0.55	0.46	0.60	0.60	0.75	0.75	0.65	0.60	C
400 mm	50 mm	0.55	0.72	0.65	0.65	0.70	0.80	0.70	0.60	C

Packing information

Item code	Thickness	Edge	Width	Length	Pack size	Pack weight	Pallet quantity	Quantity (25 tonnes trailer)
11000003141	12.0 mm	A	600 mm ¹	600 mm ¹	8 pcs	20.16 kg	480 pcs	8640 pcs
11000003142	12.0 mm	E15	600 mm ¹	600 mm ¹	8 pcs	20.16 kg	480 pcs	8640 pcs
11000003143	12.0 mm	E24	600 mm	600 mm	8 pcs	20.16 kg	480 pcs	8640 pcs
11000003144	12.0 mm	A	600 mm	1200 mm	8 pcs	40.32 kg	240 pcs	4320 pcs
11000003145	12.0 mm	E15	600 mm	1200 mm	8 pcs	40.32 kg	240 pcs	4320 pcs
11000003146	12.0 mm	E24	600 mm	1200 mm	8 pcs	40.32 kg	240 pcs	4320 pcs

¹ Standard offering. Actual tile width and length will be shorter to fit into T-grid framework.

HS code

680911000000 (UAE)

Ambient condition

Store in well-ventilated indoor dry environment and avoid water stagnation or extreme humidity.

Storage

Store inside where possible, for outdoor storage please ensure that the products are securely covered with an anchored polythene sheet or tarpaulin to protect from heat, dampness and rain.

Handling guidelines

Always wear puncture-resistant protective gloves, sleeves, appropriate safety footwear, personal protective equipment for eye and face protection. Follow proper lifting and moving techniques to ensure safe handling.

Stacking

Store on pallets supplied or elevated supports to keep them off the ground and avoid contact with soil or water. To maintain stability, place pallets on stable and level ground. Avoid stacking of tiles to prevent damage.

Recycled content

Pre-consumer	Post-consumer
0-2%	0-4%

Material is 100% recyclable



SAINT-GOBAIN GYPROC MIDDLE EAST FZE

P.O. Box. 261107 • Dubai • UAE
Tel: +971 4 814 3666

**SAINT-GOBAIN GYPROC EMIRATES
INDUSTRIES LLC**

P.O. Box 38983 • Abu Dhabi • UAE
www.gyproc.ae