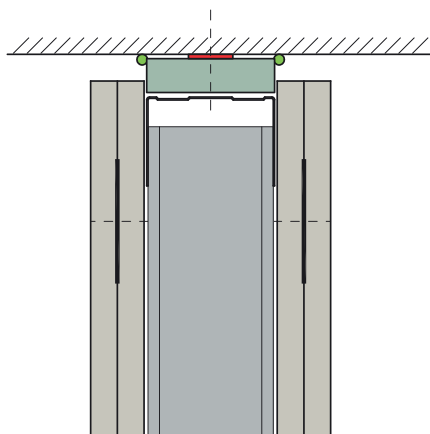


## GypWall CLASSIC / GypWall ROBUST / GypLyner IWL - Single and Double Layered Partition



## Consumption Rate Criteria

Partition Height	3000mm
Partition Quantity	100 sqm
Fire Rating	<b>60 minutes</b>

## 15mm downward movement

Component	Channel Width			
	52mm	72mm	94mm	152mm
Strip of 19mm Gyproc CoreBoard	1.73 m <sup>2</sup>	2.4 m <sup>2</sup>	3.13 m <sup>2</sup>	5.07 m <sup>2</sup>
Gyproc FireStrip (Required only if partition is fire rated)	34m			
Gypframe GFS1	68m			

## 25mm downward movement

Component	Channel Width			
	52mm	72mm	94mm	152mm
Strips of 15mm Gyproc FireStop board	3.46 m <sup>2</sup>	4.8 m <sup>2</sup>	6.26 m <sup>2</sup>	10.14 m <sup>2</sup>
Gyproc FireStrip (Required only if partition is fire rated)	34m			
Gypframe GFS1	68m			

## For General Consideration

- The above quantity take-off to be read in conjunction with the Gyproc proposal for the project and the Gyproc White Book available at [www.gyproc.ae](http://www.gyproc.ae)
- It is the responsibility of the ordering authority to check the above quantities against final drawings, BOQ and site conditions before placing material orders. Gyproc cannot be held liable for actual quantities required for the project.