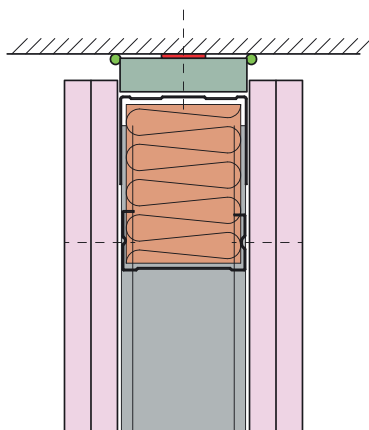


GypWall CLASSIC and GypWall ROBUST - Double Layered Partition



Consumption Rate Criteria

Partition Height	3000mm
Partition Quantity	100 sqm
Fire Rating	90/120 minutes

15mm downward movement

Component	Channel Width			
	52mm	72mm	94mm	152mm
Strip of 19mm Gyproc CoreBoard	1.73 m ²	2.4 m ²	3.13 m ²	5.07 m ²
Stone mineral wool insulation from KIMMCO Isover (Minimum Density 33 kg/m ³)	3.33 m ² Thickness same as stud width			
Gyproc FireStrip	34m			
Gypframe 'C' stud noggin to receive uppermost fixing	34m			

25mm downward movement

Component	Channel Width			
	52mm	72mm	94mm	152mm
Strips of 15mm Gyproc FireStop board	3.46 m ²	4.8 m ²	6.26 m ²	10.14 m ²
Stone mineral wool insulation from KIMMCO Isover (Minimum Density 33 kg/m ³)	3.67 m ² Thickness same as stud width			
Gyproc FireStrip	34m			
Gypframe 'C' stud noggin to receive uppermost fixing	34m			

For General Consideration

- The above quantity take-off to be read in conjunction with the Gyproc proposal for the project and the Gyproc White Book available at www.gyproc.ae
- It is the responsibility of the ordering authority to check the above quantities against final drawings, BOQ and site conditions before placing material orders. Gyproc cannot be held liable for actual quantities required for the project.