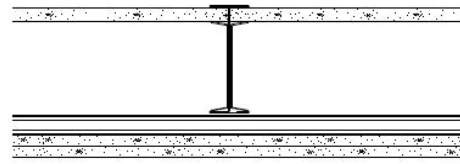
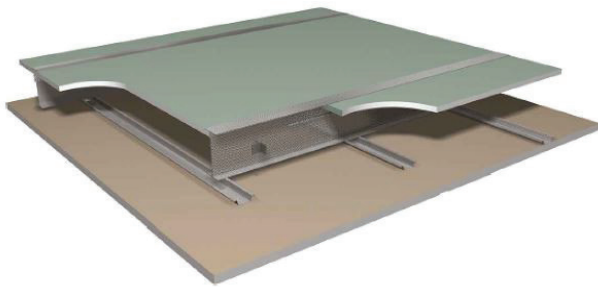


Gyproc SHAFTWALL Horizontal Double Boarded - Double Boarded System @ 600mm centres



Consumption Rate Criteria

<b>Stud Type</b>	Gypframe 'I' Stud
<b>Stud Spacing</b>	600mm centres
<b>MF5 Spacing</b>	400mm centres
<b>Ceiling Span</b>	2800mm
<b>Ceiling Area</b>	100m <sup>2</sup>

Component	Total Quantity per 100m <sup>2</sup>
Gyproc FireStop	200 m <sup>2</sup>
Gypframe 19mm CoreBoard	100 m <sup>2</sup>
Gypframe 'I' Stud	177 m
Gypframe Extra Deep Channel	72 m
Gypframe RC Retaining Channel	340 m
Gypframe SC Starter Channel	6 m
Gypframe GA3 Angle (not required if ShaftWall ceiling span(parallel to the 'I' Stud) is less than 3000mm)	35 m
Gyproc GFS1 Fixing Strap	35 m
Gypframe MF5 Furring Channel	225 m
Gyproc Jackpoint Drywall Screws (Inner Layer)	1980 pieces
Gyproc Jackpoint Drywall Screws (Outer Layer)	1980 pieces
Gyproc Jackpoint Wafer Head Screws	1220 pieces
Gyproc Sealant	4 tubes
Isover APR Glass Wool insulation supplied by KIMMCO (If required)	100 m <sup>2</sup>
Gyproc Joint Tape	130 m
Gyproc Jointing Compound	28 kg
Gyproc GA1 Perimeter Angle	6 m

For General Consideration

- The above quantity take-off to be read in conjunction with the Gyproc proposal for the project and the Gyproc White Book available at [www.gyproc.ae](http://www.gyproc.ae)
- Gypframe Channel requirements may differ depending on ceiling length and width combinations within 100m<sup>2</sup> area.
- Consumption rates estimated from typical ceiling dimensions of (2.8m x 35.71m) 100m<sup>2</sup> total area. The material requirement have been based on the standard Gyproc System proposed and does not include wastage.
- It is the responsibility of the ordering authority to check the above quantities against final drawings, BOQ and site conditions before placing material orders. Gyproc cannot be held liable for actual quantities required for the project.