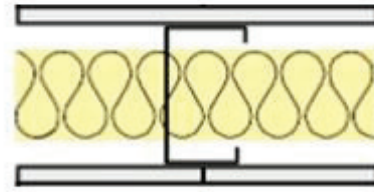
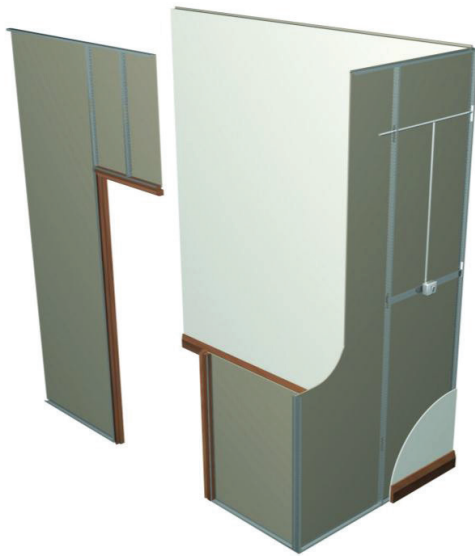


GypWall CLASSIC - Single Boarded System @ 600mm centres



Consumption Rate Criteria

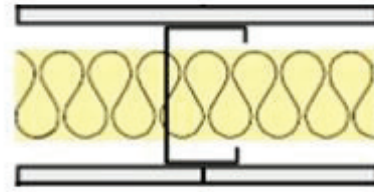
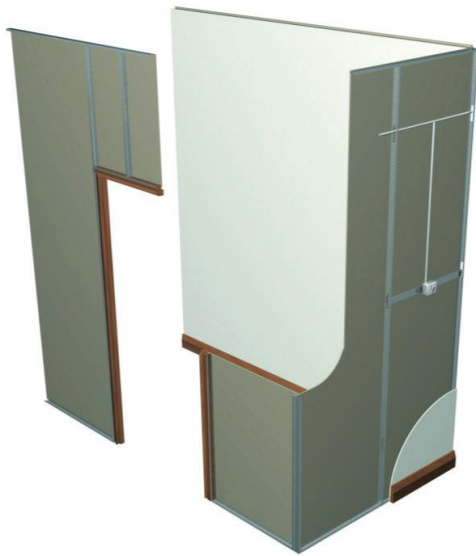
Stud Type	Gypframe 'C' Stud or 'I' Stud
Stud Spacing	600mm centres
Partition Height	3000mm
Partition Area	100m ²

Component	Total Quantity per 100m ²
Gyproc Plasterboard	200 m ²
Gypframe 'C' Stud or 'I' Stud	167 m
Gypframe Standard / Deep / Extra Deep Channel	67 m
Gypframe Stud/Channel cut piece (to support horizontalboard joints)	34 m
Gyproc Drywall Screws	2480 pieces
Gyproc Wafer Head Screws	As required pieces
Gyproc Sealant	8 tubes
Isover APR Glass Wool insulation supplied by KIMMCO (If required)	100 m ²
Gyproc Joint Tape	245 m
Gyproc Jointing Compound	56 kg
Deflection head (plasterboard strips, Gyproc FireStrip and mineral wool insulation)	Refer deflection head guidance

For General Consideration

- The above quantity take-off to be read in conjunction with the Gyproc proposal for the project and the Gyproc White Book available at www.gyproc.ae
- Where partition heights extend beyond the stud length, an additional 600mm will need to be added for the stud splice for 'C' studs and an additional 600mm length of channel for 'I' studs.
- Gypframe Channel requirements may differ depending on partition length and height combinations within 100m² area. Refer to the Gyproc White Book for details regarding the appropriate use of Gypframe Channel based on the actual partition height
- Consumption rates estimated from typical partition dimensions of 3000mm high and 100m² total area (straight partition without any corners). The material requirement have been based on the standard Gyproc System proposed and does not include wastage, additional studs where T-junctions, abutments and splayed angles, bulk filling to the base where boards have been lifted or raised slightly off the floor.
- It is the responsibility of the ordering authority to check the above quantities against final drawings, BOQ and site conditions before placing material orders. Gyproc cannot be held liable for actual quantities required for the project.

GypWall CLASSIC - Single Boarded System @ 400mm centres



Consumption Rate Criteria

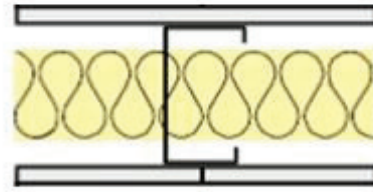
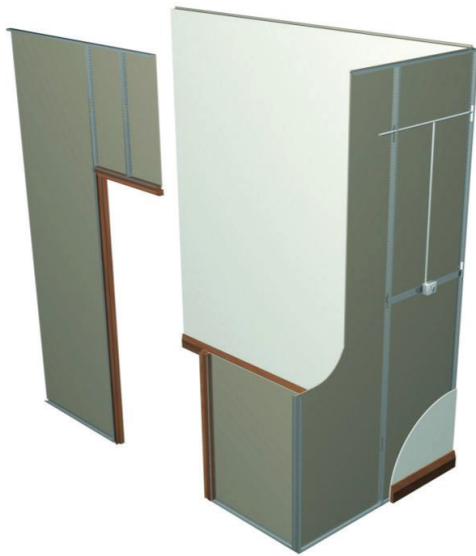
Stud Type	Gypframe 'C' Stud or 'I' Stud
Stud Spacing	400mm centres
Partition Height	3000mm
Partition Area	100m ²

Component	Total Quantity per 100m ²
Gyproc Plasterboard	200 m ²
Gypframe 'C' Stud or 'I' Stud	250 m
Gypframe Standard / Deep / Extra Deep Channel	67 m
Gypframe Stud/Channel cut piece (to support horizontalboard joints)	34 m
Gyproc Drywall Screws	2920 pieces
Gyproc Wafer Head Screws	As required pieces
Gyproc Sealant	8 tubes
Isover APR Glass Wool insulation supplied by KIMMCO (If required)	100 m ²
Gyproc Joint Tape	245 m
Gyproc Jointing Compound	56 kg
Deflection head (plasterboard strips, Gyproc FireStrip and mineral wool insulation)	Refer deflection head guidance

For General Consideration

- The above quantity take-off to be read in conjunction with the Gyproc proposal for the project and the Gyproc White Book available at www.gyproc.ae
- Where partition heights extend beyond the stud length, an additional 600mm will need to be added for the stud splice for 'C' studs and an additional 600mm length of channel for 'I' studs.
- Gypframe Channel requirements may differ depending on partition length and height combinations within 100m² area. Refer to the Gyproc White Book for details regarding the appropriate use of Gypframe Channel based on the actual partition height
- Consumption rates estimated from typical partition dimensions of 3000mm high and 100m² total area (straight partition without any corners). The material requirement have been based on the standard Gyproc System proposed and does not include wastage, additional studs where T-junctions, abutments and splayed angles, bulk filling to the base where boards have been lifted or raised slightly off the floor.
- It is the responsibility of the ordering authority to check the above quantities against final drawings, BOQ and site conditions before placing material orders. Gyproc cannot be held liable for actual quantities required for the project.

GypWall CLASSIC - Single Boarded System @ 300mm centres



Consumption Rate Criteria

Stud Type	Gypframe 'C' Stud or 'I' Stud
Stud Spacing	300mm centres
Partition Height	3000mm
Partition Area	100m ²

Component	Total Quantity per 100m ²
Gyproc Plasterboard	200 m ²
Gypframe 'C' Stud or 'I' Stud	333 m
Gypframe Standard / Deep / Extra Deep Channel	67 m
Gypframe Stud/Channel cut piece (to support horizontalboard joints)	34 m
Gyproc Drywall Screws	3360 pieces
Gyproc Wafer Head Screws	As required pieces
Gyproc Sealant	8 tubes
Isover APR Glass Wool insulation supplied by KIMMCO (If required)	100 m ²
Gyproc Joint Tape	245 m
Gyproc Jointing Compound	56 kg
Deflection head (plasterboard strips, Gyproc FireStrip and mineral wool insulation)	Refer deflection head guidance

For General Consideration

- The above quantity take-off to be read in conjunction with the Gyproc proposal for the project and the Gyproc White Book available at www.gyproc.ae
- Where partition heights extend beyond the stud length, an additional 600mm will need to be added for the stud splice for 'C' studs and an additional 600mm length of channel for 'I' studs.
- Gypframe Channel requirements may differ depending on partition length and height combinations within 100m² area. Refer to the Gyproc White Book for details regarding the appropriate use of Gypframe Channel based on the actual partition height
- Consumption rates estimated from typical partition dimensions of 3000mm high and 100m² total area (straight partition without any corners). The material requirement have been based on the standard Gyproc System proposed and does not include wastage, additional studs where T-junctions, abutments and splayed angles, bulk filling to the base where boards have been lifted or raised slightly off the floor.
- It is the responsibility of the ordering authority to check the above quantities against final drawings, BOQ and site conditions before placing material orders. Gyproc cannot be held liable for actual quantities required for the project.