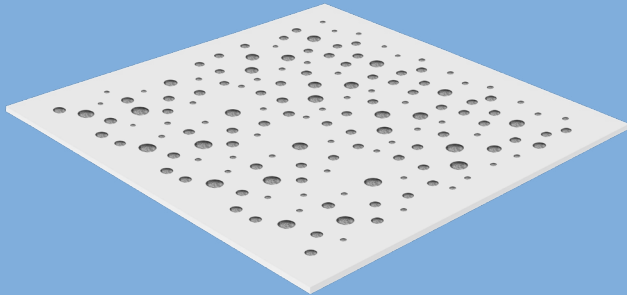


# gyptone® e'sens point 8-15-20

Perforated acoustic tile



## DESCRIPTION

Gyptone® acoustic tile range improves the acoustic environment with optimized reverberation time and improved speech intelligibility in any given room.

### Application

Suitable to use with Gypframe® T and Gypframe® Eco T grids and hangers in interior dry areas.

### Benefits

- Enhance visual appeal
- Pre-painted
- Re-paintable
- Class A fire performance
- Up to Class D sound absorption
- Durable
- Demountable

## STANDARDS

ASTM E84	Surface burning characteristic
ASTM C423	Absorption measurement
ISO 354	Absorption measurement
EN ISO 11654	Rating of sound absorption

## INSTALLATION

Gyptone® e'Sens is gypsum-based tile with acoustic fleece behind for enhanced acoustic performance.

## CHARACTERISTICS

### Weight

Appx. 10 - 10.5 kg/m<sup>2</sup>

### Fire performance

Class A

### Acoustic performance

up to 0.50 NRC | 0.30  $\alpha_w$

### Relative humidity

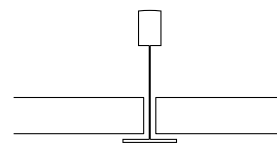
up to 70%

### Colour

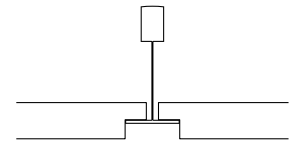
White

### Edges

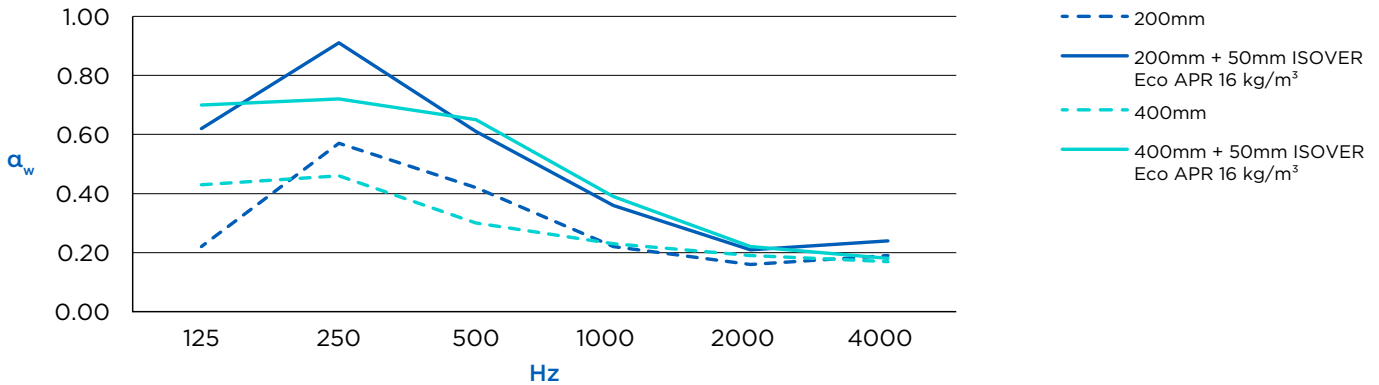
Edge A



Edge E15/E24



## Acoustic performance



Plenum depth	Insulation	Frequency (Hz)						$\alpha_w$	NRC	Absorption class
		125	250	500	1000	2000	4000			
200mm	-	0.22	0.57	0.42	0.22	0.16	0.19	0.20	0.35	E
200mm	50mm*	0.62	0.91	0.61	0.36	0.21	0.24	0.30	0.50	D
400mm	-	0.43	0.46	0.30	0.23	0.19	0.17	0.25	0.30	E
400mm	50mm*	0.70	0.72	0.65	0.39	0.22	0.18	0.30	0.50	D

\*ISOVER Eco APR 16 kg/m³

## PRODUCT INFORMATION

Item code	Thickness	Edge	Width	Length	Pack size	Pack weight	Pallet qty	Qty per container
I1000002673	12.5mm	A	600mm <sup>1</sup>	600mm <sup>1</sup>	6 pcs	21.6kg	480 pcs	6480 pcs
I1000002805	12.5mm	E15	600mm <sup>1</sup>	600mm <sup>1</sup>	6 pcs	21.6kg	480 pcs	6480 pcs
I1000002809	12.5mm	E24	600mm	600mm	6 pcs	21.6kg	480 pcs	6480 pcs
I1000002806	12.5mm	A	600mm	1200mm	4 pcs	28kg	200 pcs	2800 pcs
I1000002808	12.5mm	E15	600mm	1200mm	4 pcs	28kg	200 pcs	2800 pcs
I1000002807	12.5mm	E24	600mm	1200mm	4 pcs	28kg	200 pcs	2800 pcs

1. Standard offering.

Actual tile width and length will be 5mm shorter to fit into T-grid framework.

## HS code

680990000000 (UAE)

## RECYCLED CONTENT

Material	Pre-consumer	Post-consumer
Aluminium	15-20%	23-35%

Material is 70-75% recyclable.



SAINT-GOBAIN GYPROC MIDDLE EAST FZE

P.O. Box. 261107 • Dubai • UAE  
Tel: +971 4 814 3666

SAINT-GOBAIN GYPROC EMIRATES  
INDUSTRIES LLC

P.O. Box 38983 • Abu Dhabi • UAE  
[www.gyproc.ae](http://www.gyproc.ae)