

gyproc® hammer fix

Metal to masonry anchor



Description

Gyproc® Hammer Fix is a combination of zinc coated corrosion resistant masonry nail screw and nylon plug with expanding tip and countersunk head for non-fire rated applications.

Application

Designed specifically for securing perimeter/shadow wall angle in Gyproc® Ceiling systems to masonry wall and fixing head/floor channels and abutments in Gyproc® partition, wall lining and ceiling systems to masonry substrates in case of non-fire rated applications.

Benefits

- Can be fixed to multiple substrates.
- Corrosion resistant.
- Enhanced fixing.
- Improves installation time.
- Screw fixing allows easy dismantling (if required).

Installation facts

- Minimum engagement of anchor is 30 mm excluding any plaster finish or fixtures.
- Direct hammering and screw fixing.
- Minimum required spacing between adjacent anchors shall be 100 mm.

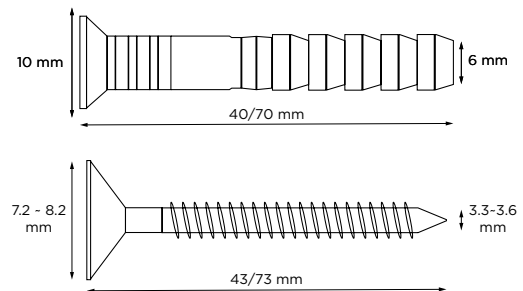
Material

Screw: Steel (GI)
Sleeve: Nylon

Colour

Screw: Steel
Nylon plug: Grey

Dimensions



System performance

Please refer to The White Book by Saint-Gobain Gyproc Middle East or technical specification document for system-dependent performance.

Performance

Zinc coating	Minimum 5.5 µm	ISO 4042
Design load	2.5 x permissible load	EL-M-OP-CMT-MD008

Permissible load

Substrate	Concrete (C20/25/30)	Solid block	Hollow block	ACC	
40 mm	0.11 kN	-	-	-	Factor of safety of 2.5
70 mm	0.20 kN	-	-	-	Factor of safety of 2.5

Packing information

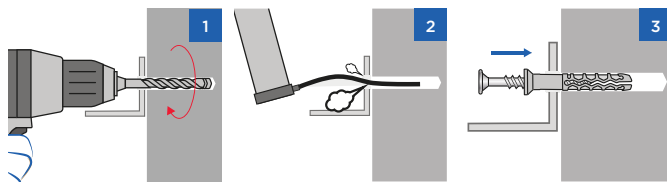
Item code	Length	Pack size	Pack weight	Carton quantity	Pallet quantity	Palletized weight
I10000014579	40 mm	Box of 100 pcs	0.45 kg	12 boxes	432 boxes	248.00 kg
I1000001460	70 mm	Box of 100 pcs	0.62 kg	10 boxes	360 boxes	278.00 kg

*Best order quantity is 1 Pallet

HS code

73181500-0000 (UAE)

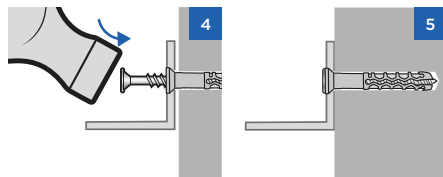
Application methodology



1
Mark and drill the appropriate depth hole

2
Remove any debris from the drill hole

3
Insert the nylon plug



4
Hammer or screw fix, the nail securely

5
Ensure the fixing is flush and secure

Storage

Store on pallets supplied, indoors and in dry conditions. To maintain stability place pallets on firm level ground.

Handling guidelines

Use mask, eye protection and gloves.



SAINT-GOBAIN GYPROC MIDDLE EAST FZE

P.O. Box. 261107 • Dubai • UAE
Tel: +971 4 814 3666

SAINT-GOBAIN GYPROC EMIRATES INDUSTRIES LLC

P.O. Box 38983 • Abu Dhabi • UAE
www.gyproc.ae