



## gyproc<sup>®</sup> wedge anchor

Metal to masonry anchor



### Description

Gyproc<sup>®</sup> Wedge Anchor is a zinc coated and corrosion resistant anchor used for multiple applications including fire rated applications.

### Application

Used for fixing into masonry. It is suitable for fixing Gyproc ceiling hangers and for fixing head/floor channels and abutments of Gyproc Partition & Wall systems.

### Benefits

- Corrosion resistant.
- Simple and quick to install.
- Suitable for fire rated systems.
- The head sits flush when the wedge anchor is fully expanded.

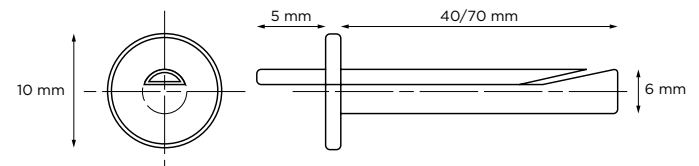
### Installation facts

- Minimum engagement of anchor is 30 mm excluding any plaster finish or fixtures.
- Direct hammering.
- Minimum required spacing between adjacent anchors shall be 100 mm.

### Material

Carbon Steel

### Dimensions



### System performance

Please refer to The White Book by Saint-Gobain Gyproc Middle East or technical specification document for system-dependent performance.

## Performance

<b>Zinc coating</b>	Minimum 3 µm	ISO 4042
<b>Yield strength</b>	614 N/mm <sup>2</sup>	ASTM A370
<b>Tensile strength</b>	763 N/mm <sup>2</sup>	ASTM A370
<b>Elongation</b>	39.4%	ASTM A370
<b>Shear strength</b>	14.7 kN	ASTM F605
<b>Design load</b>	2.5 x permissible load	EL-M-OP-CMT-MD008

## Permissible load

Substrate	Concrete (C20/25/30)	Solid block	Hollow block	ACC	
40 mm	2.98 kN	-	-	-	Factor of Safety of 2.5
70 mm	2.68 kN	-	-	-	Factor of Safety of 2.5

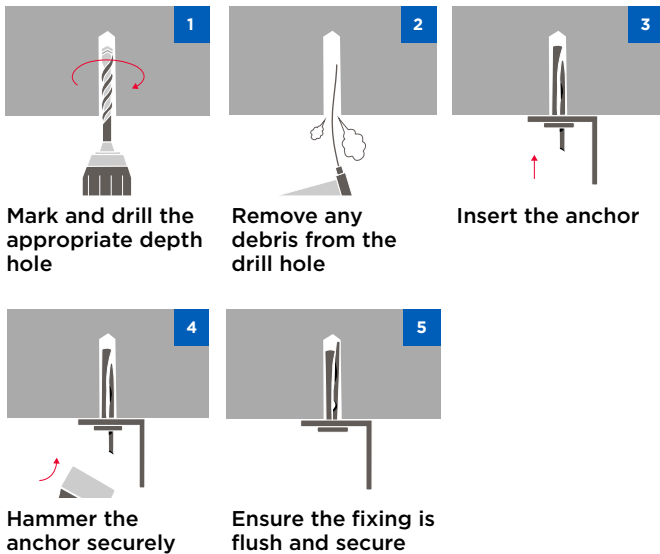
## Packing information

Item code	Length	Pack size	Pack weight	Carton qty	Pallet qty	Palletized weight
I1000001457	40 mm	Box of 100 pcs	1.11 kg	16 boxes	576 Boxes	695 kg
I1000001458	70 mm	Box of 50 pcs	0.923 kg	12 boxes	432 Boxes	454 kg

## HS code

73181500-0000 (UAE)

## Application methodology



## Storage

Store on pallets supplied, indoors and in dry conditions. To maintain stability place pallets on firm level ground.

## Handling guidelines

Use mask, eye protection and gloves.



SAINT-GOBAIN GYPROC MIDDLE EAST FZE

P.O. Box. 261107 • Dubai • UAE  
Tel: +971 4 814 3666

SAINT-GOBAIN GYPROC EMIRATES INDUSTRIES LLC

P.O. Box 38983 • Abu Dhabi • UAE  
[www.gyproc.ae](http://www.gyproc.ae)