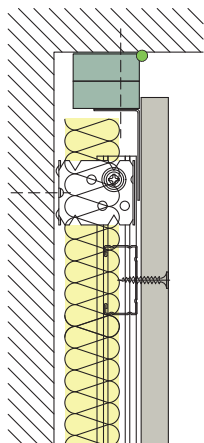


GypLyner UNIVERSAL - Single and Double Layered Partition



Consumption Rate Criteria

Partition Height	3000mm
Partition Quantity	100 sqm

15mm downward movement

Component	Quantity
Strip of 19mm Gyproc CoreBoard	1m ²
Gyproc FireStrip	34 m
Gypframe GL1	34 m

25mm downward movement

Component	Quantity
Strips of 15mm Gyproc FireStop board	2m ²
Gyproc FireStrip	34m
Gypframe GL1	34 m

For General Consideration

- The above quantity take-off to be read in conjunction with the Gyproc proposal for the project and the Gyproc White Book available at www.gyproc.ae
- FireStrip can be omitted where fire protection is not required
- It is the responsibility of the ordering authority to check the above quantities against final drawings, BOQ and site conditions before placing material orders. Gyproc cannot be held liable for actual quantities required for the project.