

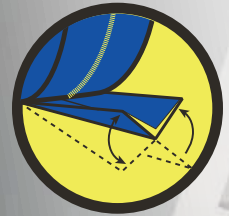
# LEVELLINE® Flex

HIGH-STRENGTH CORNER

Technical & Safety Datasheet



# LEVELLINE®



# LEVELLINE® Flex

## TECHNICAL DATASHEET

### INTRODUCTION

LEVELLINE® Flex is a drywall corner that comes in a 70mm x 30m roll and flexes to any inside or outside corner angle. It is perfect for partition corners, ceiling bulkheads and any obtuse angles.

#### Product Data

Length: 30m rolled lengths  
Width: 70mm

#### Dimensions

Centre thickness: 1mm  
Edge thickness: 0.5mm  
Total flange width: 35mm

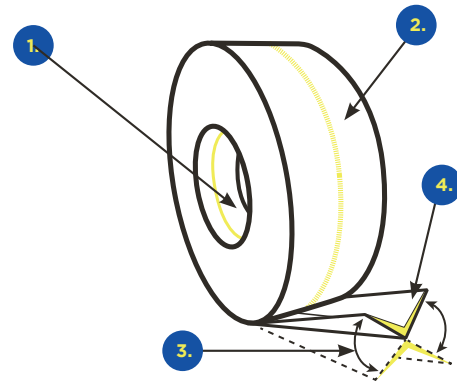


#### Packaging

Rolls per box	Boxes per carton	Carton weight (kg)
1	12	15.50

### FEATURES & BENEFITS

- Crisp and sharp corners
- Crack prevention
- Excellent bonding
- Straight lines
- Improved impact resistance
- Obtuse corners



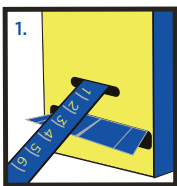
### STANDARDS

ASTM C475: Standard Specification for Joint Compound and Joint Tape for Finishing Gypsum Board.

ASTM C840: Standard Specification for Application and Finishing of Gypsum Board.

1. With a high strength, tapered, copolymer core, Gyproc LEVELLINE® Flex will not easily split or dent.
2. The formulated surface paper accepts any standard finish and resists abrasion.
3. With its memory-free hinge, LEVELLINE® Flex can be bent and shaped more than once to adjust to any angle for instant application.
4. LEVELLINE® flexes to any inside or outside angle required.

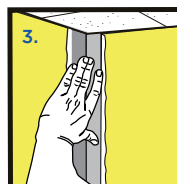
### INSTALLATION GUIDELINES



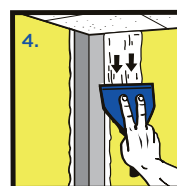
1. Open LEVELLINE® Flex box and feed product through slot on side of box. Insert hook of tape measure into narrow slot to measure length of LEVELLINE® Flex needed. Cut to length with scissors, snips or utility knife.



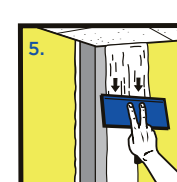
2. With a 100mm tapping knife, apply Gyproc® Jointing Compound to each corner at least 100mm wide and 2-3mm thick ensuring that the paper liner is fully covered with joint compound.



3. Press LEVELLINE® Flex into position and straighten. Firmly embed corner trim using the tapping knife or roller. Remove any excess compound and allow to dry.



4. With a 100mm tapping knife, apply a second coat of Gyproc® Jointing Compound, carefully feathering the compound 100mm out from the nose of the trim. Allow to dry.



5. With a 200mm finishing knife, apply Gyproc® Jointing Compound to the corner as smoothly as possible, feathering out the final coat 200mm from the nose of the trim. Allow to dry. Sand and paint.

## HEALTH & SAFETY

### 1. IDENTIFICATION OF THE SUBSTANCES/PREPARATION AND COMPANY

#### LEVELLINE® FLEX

Supplier Saint-Gobain Gyproc Emirates Industries L.L.C  
ICAD 1, Mussafah  
Abu Dhabi  
United Arab Emirates  
P.O. Box 38983

Free Phone: +971 800 GYPROC (497762)  
E-Mail: gyproc-me@saint-gobain.com

### 2. COMPOSITION/INFORMATION OF INGREDIENTS

Contains no hazardous ingredients.

### 3. HAZARDS IDENTIFICATION

#### Classification:

Not classified under any hazard classes.

#### Label elements:

Not Classified.

### 4. FIRST AID MEASURES

**Eye contact** P305+P351+P338 - If in eyes, rinse cautiously with water for several minutes. Remove contact lenses, if present and easy to do. Continue rinsing.

P337+P313 - If eye irritation persists, get medical attention.

**Skin contact** P302+352 - If on skin, wash with plenty of water.

P332+P313 - If skin irritation occurs, get medical attention.

**Ingestion** P301+P330 + P331 - If swallowed, rinse mouth. Do not induce vomiting.

**Inhalation** P304+P340 - If inhaled, remove person to fresh air and keep comfortable for breathing.

**General** P314 - Get medical attention if you feel unwell.

### 5. FIRE FIGHTING MEASURES

#### Extinguishing Media:

Use water and other extinguishing media appropriate to the surrounding fire conditions.

#### Specific hazards arising from the product:

Product is combustible if involved in a fire.  
Under fire conditions products of combusting may include sulfur oxides, carbon monoxide and carbon dioxide.

#### Special protective equipment and precautions for fire-fighters:

As for any fire, evacuate the area and fight the fire from a safe distance. Firefighters must wear full protective equipment including self-contained breathing apparatus with chemical protection clothing.

### 6. HANDLING AND STORAGE

#### Precautions for safe handling:

Wear protective gloves as needed to protect hands from sharp edges. Normal and recommended cutting methods are the use of hand-held snips. Avoid sanding, grinding, and cutting operations that generate dust.

#### Conditions for safe storage, including any incompatibilities:

Store in dry condition, protected from weather and out of direct sunlight.

Protect from excess moisture. Do not stack material more than 2 pallets high. Rotate stock.

### 7. REACTIVITY

Not reactive.

### 8. CHEMICAL STABILITY

Stable at normal ambient and anticipated storage and handling conditions.

### 9. ECOLOGICAL INFORMATION

Ecotoxicity data is not available.

### 10. DISPOSAL CONSIDERATION

Do not discharge into any sewers, on the ground or into any body of water. The required hazard evaluation of the waste and compliance with the applicable hazardous waste laws are the responsibility of the user. Dispose off contents/container in accordance with local, regional, national and international regulations.

### 11. TRANSPORT INFORMATION

To transport within the users' premises, always use closed containers that are secure and upright. Ensure that operational personnel know what to do in event of spillage. Non-Hazardous.

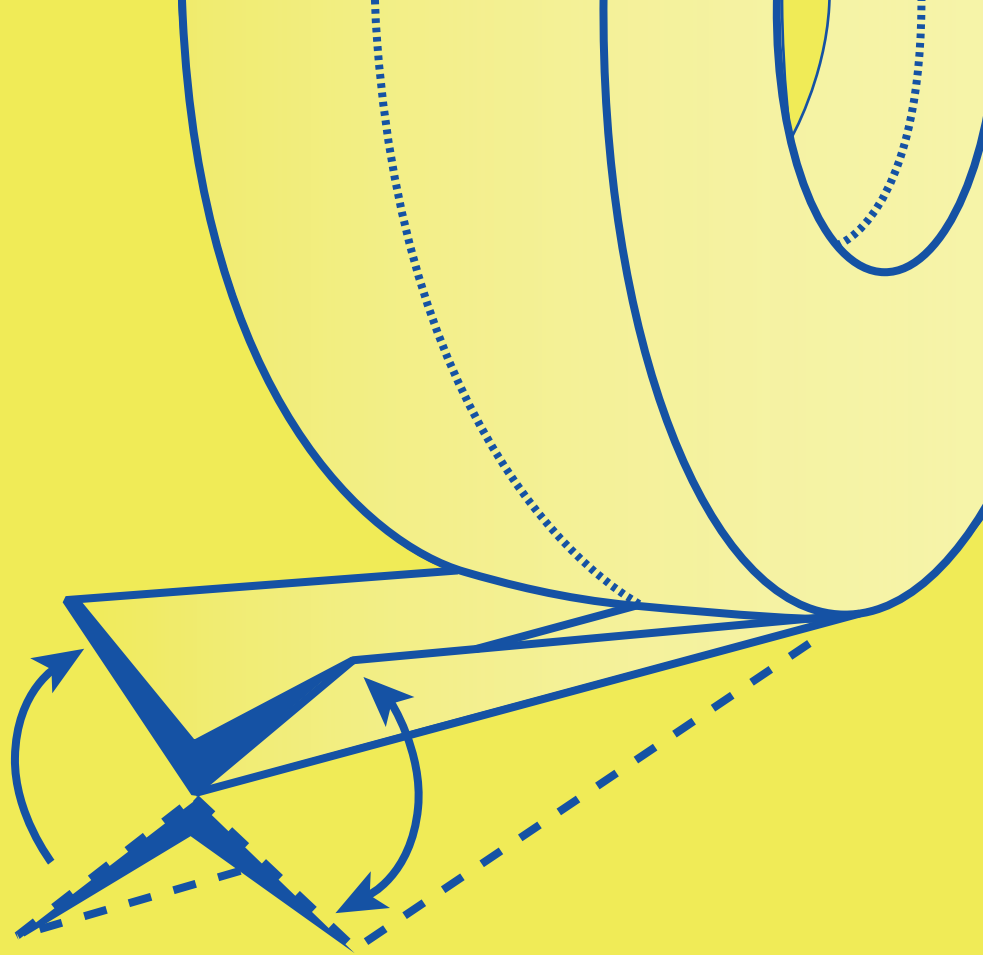
### 12. REGULATORY INFORMATION

According to current Classification, Labelling, and Packaging (CLP) Regulations in force, the product is determined as not being dangerous.

#### Note to User:

This Product Datasheet does not constitute a workplace risk assessment for COSHH.

There are a number of situations where the approach to manual handling of Gyproc products should be considered. For further guidance, please refer to the manual handling section of the Middle East WHITE BOOK, or contact Gyproc technical department.



**Saint-Gobain Gyproc Middle East FZE**

P.O.Box.261107  
Dubai, UAE  
Tel: +971 (4) 450 2300  
Fax: +971 (4) 446 8701

**Saint-Gobain Gyproc Emirates Industries LL.C**

P.O. Box 38983  
ICAD 1, Mussafah  
Abu Dhabi, UAE

[www.gyproc.ae](http://www.gyproc.ae)

First Edition  
Literature Code: 0292-DS-039

