



# GLASROC® X TAPE

**Glasroc® X Tape** is a high performance glass mat drywall tape that is ideal for use with Glasroc® X board and other Gyproc® drywall systems.

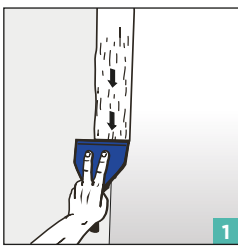
## CHARACTERISTICS

- Innovative drywall joint tape
- Suitable for internal and semi-exposed applications when used in conjunction with Glasroc® X, MR and M2TECH range of boards
- Easy to cut and quick to install
- Embeds easily into Gyproc® Jointing Compound to provide a smooth finish
- Mold resistant
- Super thin technology that provides a strong and crack resistant joint

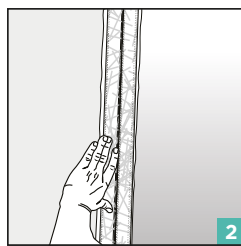
## TECHNICAL DATA

Length (m)	Width (mm)	Thickness (mm)	Weight (g/m <sup>2</sup> )
50	50	0.3	35

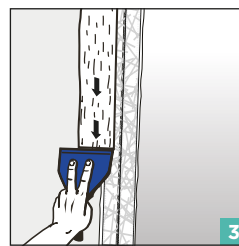
## INSTALLATION GUIDELINES



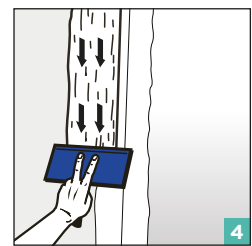
Using a 100mm tapping knife, apply a bedding coat of Gyproc® Jointing Compound to the board joint at approximately 100mm wide and 1-2mm in thickness ensuring that the joint is fully covered.



Position Glasroc X® Tape and embed it into the jointing compound using the tapping knife. Remove any excess compound and allow to dry.



Apply a second coat of Gyproc® Jointing Compound with a 150mm tapping knife. Allow to dry.



Apply a finishing coat of Gyproc® Jointing Compound as smoothly as possible with a 200mm finishing knife, feathering out the final coat 200mm from the board joint. Allow to dry. Sand and paint.

T: 800 GYPROC (497762) UAE TOLL FREE

T: +971 (4) 4502300 INTERNATIONAL

[www.gyproc.ae](http://www.gyproc.ae)

Literature Code: 0318-FL-01

