

# Habito<sup>®</sup> Flex 83

## STRUCTURAL LAMINATE DRYWALL CORNER SYSTEM

Technical & Safety Datasheet



Made With  
**SLAM**  
TECHNOLOGY<sup>®</sup>



# Habito® Flex 83

## TECHNICAL DATASHEET



### INTRODUCTION

Habito® Flex 83 provides a perfect corner by fitting every angle, every time. Applied with Gyproc® Jointing Compound, it has a uniform, strong, structural bond thanks to its paper backing. Faced with a tight fibered, high quality paperboard and backed with a joint paper tape, it's ideal for applying paint or texture to.

#### Product Data

Length: 30m rolled lengths  
Width: 83mm

#### Dimensions

Centre thickness: 1.12mm  
Edge thickness: 0.5mm  
Total flange width: 41.4mm



#### Packaging

Rolls per box	Boxes per carton	Carton weight (kg)
1	10	19

### STANDARDS

ASTM C475: Standard Specification for Joint Compound and Joint Tape for Finishing Gypsum Board.

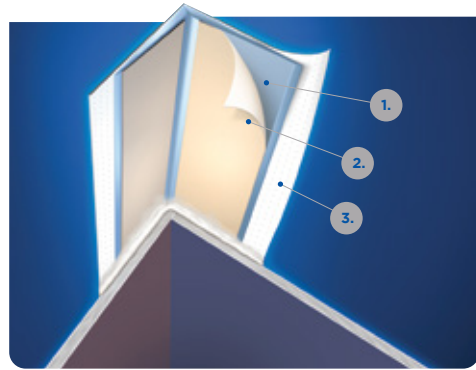
ASTM C840: Standard Specification for Application and Finishing of Gypsum Board.

### FEATURES & BENEFITS

- Ultimate impact resistance
- Crack prevention
- Crisp and sharp corners
- Straight lines
- Excellent bonding
- Obtuse corners

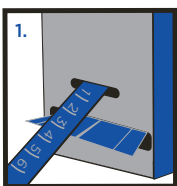
#### SLAM® Technology - A Breakthrough in Drywall Corner Finishing

Habito® Flex 83 Structural Laminate (SLAM) Corner System actually becomes part of the structure. SLAM Technology integrates three key components that deliver superior strength, durability, flexibility and faster installation.



1. Tapered high strength copolymer core withstands severe impacts. Won't rust. Requires less Gyproc® Jointing Compound.
2. Joint tape permanently bonds corner to drywall with Gyproc® Jointing Compound.
3. Formulated surface paper eliminates cracks, chips and peels, resists abrasion, and accepts any standard finish.

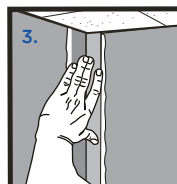
### INSTALLATION GUIDELINES



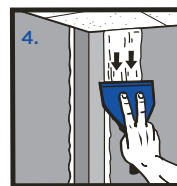
1. Open Habito® Flex 83 box and feed product through slot on side of box. Insert hook of tape measure into narrow slot to measure length of Habito® Flex 83 needed. Cut to length with scissors, snips or utility knife.



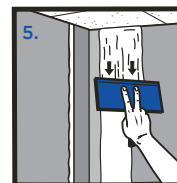
2. With a 100mm taping knife, apply Gyproc® Jointing Compound to each corner at least 100mm wide and 2-3mm thick ensuring that the paper liner is fully covered with joint compound.



3. Press Habito® Flex 83 into position and straighten. Firmly embed corner trim using the taping knife or roller. Remove any excess compound and allow to dry.



4. With a 100mm taping knife, apply a second coat of Gyproc® Jointing Compound, carefully feathering the compound 100mm out from the nose of the trim. Allow to dry.



5. With a 200mm finishing knife, apply Gyproc® Jointing Compound to the corner as smoothly as possible, feathering out the final coat 200mm from the nose of the trim. Allow to dry. Sand and paint.

### HEALTH & SAFETY

#### 1. IDENTIFICATION OF THE SUBSTANCES/ PREPARATION AND COMPANY

##### Habito® Flex 83

Supplier Saint-Gobain Gyproc Emirates Industries L.L.C  
ICAD 1, Mussafah  
Abu Dhabi  
United Arab Emirates  
P.O. Box 38983

Free Phone: +971 800 GYPROC (497762)  
E-Mail: gyproc-me@saint-gobain.com

#### 2. COMPOSITION/ INFORMATION OF INGREDIENTS

Contains no hazardous ingredients.

#### 3. HAZARDS IDENTIFICATION

##### Classification:

Not classified under any hazard classes.

##### Label elements:

Not Classified.

#### 4. FIRST AID MEASURES

**Eye contact** P305+P351+P338 - If in eyes, rinse cautiously with water for several minutes. Remove contact lenses, if present and easy to do. Continue rinsing.

P337+P313 - If eye irritation persists, get medical attention.

**Skin contact** P302+352 - If on skin, wash with plenty of water.

P332+P313 - If skin irritation occurs, get medical attention.

**Ingestion** P301+P330 + P331 - If swallowed, rinse mouth. Do not induce vomiting.

**Inhalation** P304+P340 - If inhaled, remove person to fresh air and keep comfortable for breathing.

**General** P314 - Get medical attention if you feel unwell.

#### 5. FIRE FIGHTING MEASURES

##### Extinguishing Media:

Use water and other extinguishing media appropriate to the surrounding fire conditions.

##### Specific hazards arising from the product:

Product is combustible if involved in a fire.

Under fire conditions products of combustion may include sulphur oxides, carbon monoxide and carbon dioxide.

##### Special protective equipment and precautions for fire-fighters:

As for any fire, evacuate the area and fight the fire from a safe distance. Firefighters must wear full protective equipment including self-contained breathing apparatus with chemical protection clothing.

#### 6. HANDLING AND STORAGE

##### Precautions for safe handling:

Wear protective gloves as needed to protect hands from sharp edges. Normal and recommended cutting methods are the use of hand-held snips. Avoid sanding, grinding, and cutting operations that generate dusts.

##### Conditions for safe storage, including any incompatibilities:

Store in dry condition, protected from weather and out of direct sunlight.

Protect from excess moisture. Do not stack material more than 2 pallets high. Rotate stock.

#### 7. REACTIVITY

Not reactive.

#### 8. CHEMICAL STABILITY

Stable at normal ambient and anticipated storage and handling conditions.

#### 9. ECOLOGICAL INFORMATION

Ecotoxicity data are not available.

#### 10. DISPOSAL CONSIDERATION

Do not discharge into any sewers, on the ground or into any body of water. The required hazard evaluation of the waste and compliance with the applicable hazardous waste laws are the responsibility of the user. Dispose off contents/container in accordance with local, regional, national and international regulations.

#### 11. TRANSPORT INFORMATION

To transport within the users' premises, always use closed containers that are secure and upright. Ensure that operational personnel know what to do in event of spillage. Non-Hazardous

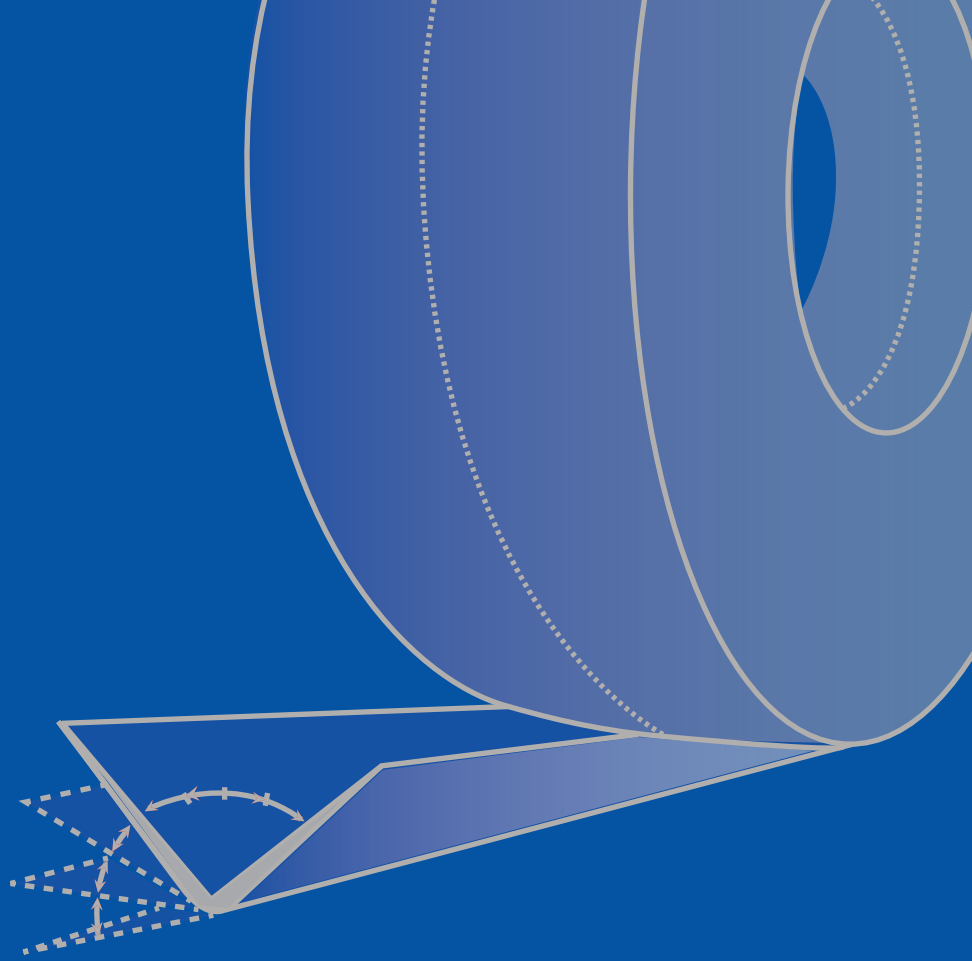
#### 12. REGULATORY INFORMATION

According to current Classification, Labelling, and Packaging (CLP) Regulations in force, the product is determined as not being dangerous.

##### Note to User:

This Product Datasheet does not constitute a workplace risk assessment for COSHH.

There are a number of situations where the approach to manual handling of Gyproc products should be considered. For further guidance, please refer to the manual handling section of the Middle East WHITE BOOK, or contact Gyproc technical department.



**Saint-Gobain Gyproc Middle East FZE**

P.O. Box. 261107

Dubai, UAE

Tel: +971 (4) 450 2300

Fax: +971 (4) 446 8701

**Saint-Gobain Gyproc Emirates Industries LL.C**

P.O. Box 38983

ICAD 1, Mussafah

Abu Dhabi, UAE

[www.gyproc.ae](http://www.gyproc.ae)

First Edition  
Literature Code: 0291-DS-038

