



GYPROC® METAL CORNER TAPE

Gyproc Metal Corner Tape is a high quality paper joint tape strengthened with two corrosion-resistant galvanized steel strips for the finishing of internal and external angles in drywall construction.

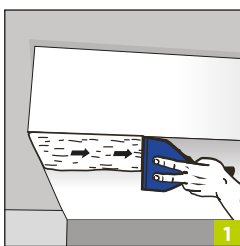
CHARACTERISTICS

- Easy to apply
- Flexible steel backing easily fits a wide range of angles
- Pin hole perforations for better application and improved bonding
- Suitable for construction, repair or alteration work
- Conforms to EN 14353
- Ideal for bulkheads and external corners not subject to impact

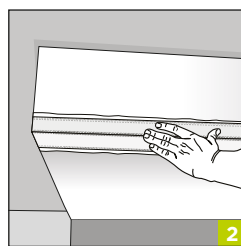
TECHNICAL DATA

Length (m)	Width (mm)	Thickness (mm)	Quantity per box (roll)
30	50	0.5	10

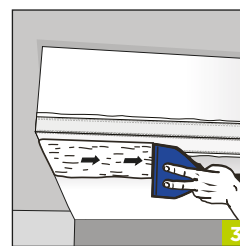
INSTALLATION GUIDELINES



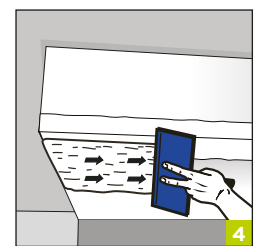
1
Apply Gyproc® Jointing Compound with a 100mm tapping knife to both sides of the corner at least 100mm wide and 1-2mm thick ensuring that the paper liner is fully covered with joint compound.



2
Press Gyproc® Metal Corner Tape into position and straighten. Firmly embed corner trim using the tapping knife or roller. Remove any excess compound and allow to dry.



3
Apply a second coat of Gyproc® Jointing Compound with a 150mm tapping knife, carefully feathering the compound 150mm out from the nose of the trim. Allow to dry.



4
Apply a finishing coat of Gyproc® Jointing Compound to the corner as smoothly as possible with a 200mm finishing knife, feathering out the final coat 200mm from the nose of the trim. Allow to dry. Sand and paint.

T: 800 GYPROC (497762) UAE TOLL FREE

T: +971 (4) 4502300 INTERNATIONAL

www.gyproc.ae

Literature Code: 0309-FL-01

