



Gypsum Recycling

Plasterboard Recycling Brochure



WHAT IS IT?

At Gyproc, we believe in waste avoidance which we achieve by working closely with our customers to design systems and solutions that result in minimum waste and at the same time we also provide training to avoid unnecessary waste at site.

Where waste is inevitable, Gyproc are able to offer their support. We are the only plasterboard manufacturer in the United Arab Emirates to have a permit to recycle plasterboard waste through our association with Tadweer.



HOW DOES IT WORK ?



THE ONLY UAE PROVIDER

Plasterboard waste produced on your construction site is stored in dedicated dump bins or skips supplied by your waste management provider

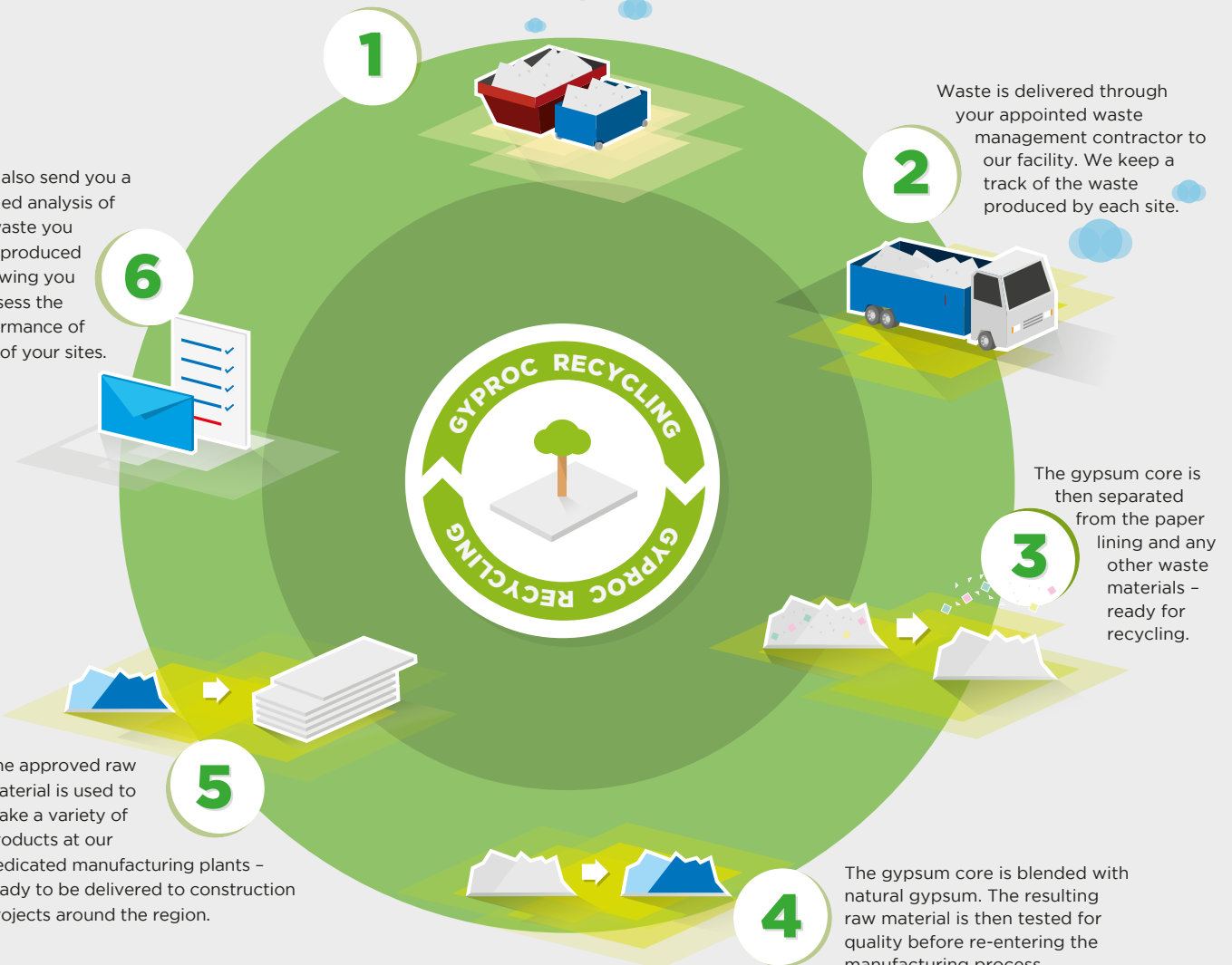
Waste is delivered through your appointed waste management contractor to our facility. We keep a track of the waste produced by each site.

We'll also send you a detailed analysis of the waste you have produced - allowing you to assess the performance of each of your sites.

The gypsum core is then separated from the paper lining and any other waste materials - ready for recycling.

The approved raw material is used to make a variety of products at our dedicated manufacturing plants - ready to be delivered to construction projects around the region.

The gypsum core is blended with natural gypsum. The resulting raw material is then tested for quality before re-entering the manufacturing process.



Send in your recycling enquiries to recycle.gyproc@saint-gobain.com

WHAT TO DO?

three steps

step 1



Appoint waste contractor to transport segregated plasterboard waste.

Seek any inter-Emirate approvals from Municipality*.

Send e-mail to

recycle.gyproc@saint-gobain.com

step 2



Transporter to deliver segregated, clean waste to our facility.

step 3



Gyproc will provide regular reports on quality of waste recycled.

Go Green!

* It is the responsibility of the waste generator to gain all necessary approvals

WHY?

BENEFITS

1

REDUCE WASTE TO LANDFILL



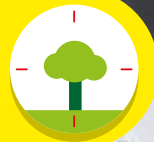
2

COMPANY SPECIFIC ENVIRONMENTAL TARGETS



3

STRICTER ENVIRONMENTAL TARGETS



4

GREEN BUILDING CODE 'WASTE MANAGEMENT' POINT CONTRIBUTION



Every major green building code has a requirement that each project diverts a percentage of construction waste from landfill to recycling initiatives. Measured in either volume or weight points are awarded for up to 50% of waste being recycled with double the points available for up to 75%

By offering a recycling solution Gyproc now contributes to you achieving these targets.

For more information on the points available check the points calculators for the following local schemes



breeam



Sign up your site for plasterboard recycling www.gyproc.ae/recycling





SUB-CONTRACTOR GUIDE

Waste plasterboard is not only costly but is potentially damaging to the environment and reduces building sustainability benefits for your client.

You can help to cut the cost of waste by following the 3 'R's -

Reduce, Re-use and Recycle



REDUCE

On larger projects, it may be possible to prevent waste by ordering plasterboard and metal in bespoke lengths, to suit the individual job.

By cutting the amount of waste you produce you will:

Save money

Improve site safety and logistics

Make your job easier and quicker by using cut-to-size products



Masdar City, Abu Dhabi - UAE

RE-USE

Where possible plan your job so that any plasterboard off-cuts can be utilised elsewhere - for instance in room corners or above openings.

By re-using off-cuts you will:

Cut expensive waste

Reduce costs

Help the environment



New York University, Abu Dhabi - UAE

RECYCLE

Plasterboard waste is classed as non-inert and can only be disposed of at certain sites - so landfill is an expensive option. Join our new recycling service (the first in the UAE) and Gyproc will recycle your offcuts into new board.

By recycling you will:

Take control of your waste

Manage your site more effectively

Drive down costs

Minimise expensive landfill

Start now by formulating your own Site Waste Management Plan.

For **Site Segregation DEMO**, contact our site support team.

800 GYPROC (497762)



recycle.gyproc@saint-gobain.com



WHAT DO THEY HAVE TO SAY?

We are committed to managing our impact on the environment and **reducing waste-to-landfill**. We have partnered with Gyproc and the Centre for Waste Management (CWM) - Abu Dhabi to recycle plasterboard through the only approved **plasterboard recycling initiative** in the Middle East.

We are now looking at recycling plasterboard waste from all our project sites in the UAE.



Hari Kishan Meka
Regional Sustainability Manager
LEED® GA, Estidama PQP
Al Futtaim Carillion LLC



Bharat Harwani
Senior Architect
LEED AP (BD+C), PQP
AE7

Buildings are a stockpile of embodied energy and every step made to boost **environmentally-conscious construction** is to be lauded. A sustainable building should leave as small an environmental footprint as possible, both in its construction and over its planned lifetime.



Saint-Gobain Gyproc Middle East FZE

P.O.Box.261107
Dubai, UAE
Tel: +971 (4) 4502300
Fax: +971 (4) 4468701

Saint-Gobain Gyproc Emirates Industries LLC

P.O. Box 38983
I CAD 1, Mussafah
Abu Dhabi, UAE

www.gyproc.ae



The paper used for this
brochure comes from
PEFC mixed sources

PEFC-01-31-83

Vegetable ink has been used
in printing this brochure

First Edition
Literature Code: 0023-RB-01

